

Other Information

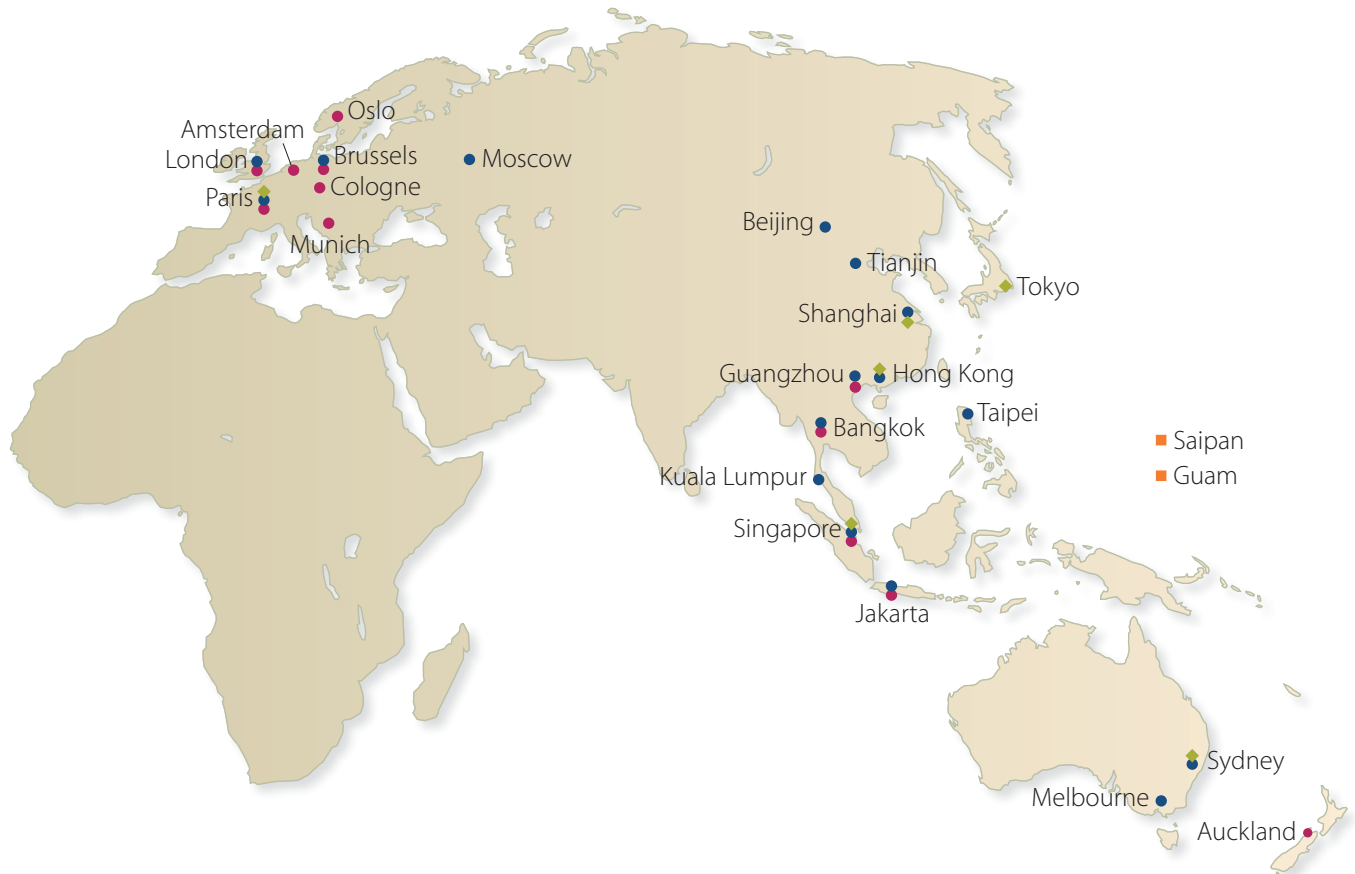
67

OVERSEAS NETWORK	68
SUBSIDIARIES AND AFFILIATES	70
BOARD OF DIRECTORS AND AUDITORS	72
ORGANIZATION	73
MILESTONES	74
CORPORATE DATA (NON-CONSOLIDATED)	75

Overseas Network

As of July 1, 2007

68



REPRESENTATIVE OFFICES

London

1st Floor, 50 Mark Lane, London, EC3R 7QR,
United Kingdom
Tel. +44-20-7481-9157
Fax. +44-20-7481-9158

Brussels

Belgicastraat 13, 1930 Zaventem, Belgium
Tel. +32-2-511-5567
Fax. +32-2-513-4847

Paris

36 Bd de la République,
92423 Vaucresson Cedex, France
Tel. +33-1-4795-7920
Fax. +33-1-4795-7959

Moscow

Office 803, Entr. 3 12 Krasnopresnenskaya nab.,
WTC, Moscow 123610, Russia
Tel. +7-495-258-2498
Fax. +7-495-258-2497

New York

60 East 42nd Street, Suite 843,
New York, NY 10165, U.S.A.
Tel. +1-212-916-3939
Fax. +1-212-682-9079

Chicago

475N Martingale Road Suite 330, Schaumburg,
IL 60173, U.S.A.
Tel. +1-847-619-4928
Fax. +1-847-619-6272

Kentucky

7300 Turfway Road, Suite 240, Florence,
Kentucky 41042, U.S.A.
Tel. +1-859-282-8787
Fax. +1-859-647-4333

Los Angeles

21515 Hawthorne Blvd., #420, Torrance,
California 90503, U.S.A.
Tel. +1-310-540-6890
Fax. +1-310-540-9030

Honolulu

1600 Kapiolani Boulevard, Suite 1520, Honolulu,
Hawaii 96814, U.S.A.
Tel. +1-808-951-1724
Fax. +1-808-949-6696

Sydney <Australia Branch>

Level 12, 309 Kent Street, Sydney N.S.W.
2000, Australia
Tel. +61-2-9248-4888
Fax. +61-2-9248-4880

Melbourne

Level 1, 409 St. Kilda Road, Melbourne,
Victoria 3004, Australia
Tel. +61-3-9869-0101
Fax. +61-3-9867-3640

Beijing

Room No. 410, China World Tower 1, No. 1
Jian Guo Men Wai Avenue, Beijing, P.R.C.
Tel. +86-10-6505-8960
Fax. +86-10-6505-8962

Tianjin

Room No. 1609, Tianjin International Building,
75 Nanjing Road, Tianjin, P.R.C.
Tel. +86-22-2332-0060
Fax. +86-22-2332-0061

Shanghai

Room No. 2605, Maxdo Centre, No. 8
Xing Yi Road, Shanghai, P.R.C.
Tel. +86-21-5208-1785
Fax. +86-21-5208-1786

Guangzhou

Room No. 01B, 66th Floor, Tower CMC Plaza,
233 Tianhe Road North, Guangzhou, P.R.C.
Tel. +86-20-3877-3961
Fax. +86-20-3877-0166

Taipei

Room 2212, 22nd Floor, 333 Keelung Road, Sec.
1, Taipei 10548, Taiwan, Republic of China
Tel. +886-2-2757-6300
Fax. +886-2-2757-6095

Hong Kong

c/o Asia Insurance Co., Ltd., 16th Floor,
World-Wide House, 19 Des Voeux Road,
Central, Hong Kong
Tel. +852-3606-9022
Fax. +852-2868-1413

Bangkok

22nd Floor, Bangkok Insurance/YWCA Building,
25 South Sathorn Road, Tungmahamek,
Sathorn, Bangkok 10120, Thailand
Tel. +66-2-677-3930
Fax. +66-2-677-3937

Singapore

16 Raffles Quay #11-03B, Hong Leong Building,
Singapore 048581 Republic of Singapore
Tel. +65-6224-6759
Fax. +65-6224-7296

Jakarta

4th Floor, North Tower, Menara Jamsostek,
Jalan Jenderal,
Gator Subroto No. 38, Jakarta 12710, Indonesia
Tel. +62-21-5296-1541
Fax. +62-21-5296-1563

Kuala Lumpur

Bangunan Oriental Capital, 36 Jalan Ampang,
50450 Kuala Lumpur, Malaysia
Tel. +60-3-2070-2668
Fax. +60-3-2031-7187



- Representative Office
- Subsidiaries and Affiliates
- Underwriting Agency
- ◆ Aioi Overseas "Anshin" Dial Center

UNDERWRITING AGENCIES

UNITED STATES

Takagi & Associates, Inc.
Flame Tree Plaza, Suite 200, 540 Pale San Vitores Road, Tumon, Guam, U.S.A.

COMMONWEALTH OF THE NORTHERN MARIANA ISLANDS

Takagi & Associates, Inc.
<Saipan Branch>
PPP 602, Box 10000, 2nd Floor, Bank of Hawaii Bldg., Mariana Heights Park, Puerto Rico, Saipan MP96950 C.N.M.I.

SUBSIDIARIES AND AFFILIATES

UNITED KINGDOM

Aioi Motor and General Insurance Company of Europe Ltd.

1st Floor, 50 Mark Lane, London EC3R 7QR, United Kingdom

Aioi Insurance Management Ltd.

1st Floor, 50 Mark Lane, London EC3R 7QR, United Kingdom

Toyota Insurance Management Ltd.

1st Floor, 50 Mark Lane, London EC3R 7QR, United Kingdom

BELGIUM

Aioi Motor and General Insurance Company of Europe Ltd.

<Belgian Branch>

Belgicastraat 13, 1930 Zaventem, Belgium

FRANCE

Aioi Motor and General Insurance Company of Europe Ltd.

<Paris Branch>

36 Bd de la République
92423 Vaucresson Cedex, France

GERMANY

Aioi Motor and General Insurance Company of Europe Ltd.

<German Branch>

Leopoldstrasse 208, 80804 Munich, Germany

Toyota Insurance Management Ltd.

<German Branch>

Toyota-Allee 5, 50415 Köln, Germany

Aioi Life Insurance of Europe AG

Toyota-Allee 5, 50833 Köln, Germany

NETHERLANDS

Aioi Motor and General Insurance Company of Europe Ltd.

<Netherlands Branch>

c/o WA Hienfeld BV, Drentestraat 5, 1083 HK, Amsterdam, Netherlands

NORWAY

Aioi Motor and General Insurance Company of Europe Ltd.

<Norwegian Branch>

c/o Tennant Forsikring AS, P.O. Box 418, Sentrum, 0103 Oslo, Norway

UNITED STATES

Aioi Insurance Company of America

60 East 42nd Street, New York, NY 10165, U.S.A.

DTRIC Insurance Company Ltd.

1600 Kapiolani Blvd., Suite 1520, Honolulu, Hawaii 96814-3801, U.S.A.

DTRIC Insurance Underwriters, Ltd.

1600 Kapiolani Blvd., Suite 1520, Honolulu, Hawaii 96814-3801, U.S.A.

Paladin Reinsurance Corporation

1166 Avenue of the Americas, 12th Floor, New York, NY 10036, U.S.A.

THAILAND

Aioi Bangkok Insurance Company Ltd.

22nd Floor, Bangkok Insurance/YWCA Building, 25 South Sathorn Road, Tungmahamek, Sathorn, Bangkok 10120, Thailand

Bangkok Chayoratr Co., Ltd.

(brokerage firm)

10th Floor, Bangkok Insurance/ YWCA Building, 25 South Sathorn Road, Tungmahamek, Sathorn, Bangkok 10120, Thailand

Bangkok Chayolife Co., Ltd.

(brokerage firm)

10th Floor, Bangkok Insurance/ YWCA Building, 25 South Sathorn Road, Tungmahamek, Sathorn, Bangkok 10120, Thailand

SINGAPORE

Aioi Management Services

Singapore Pte, Ltd.

16 Raffles Quay #11-03B, Hong Leong Building, Singapore 048581, Republic of Singapore

INDONESIA

PT. Asuransi Aioi Indonesia

4th Floor, North Tower, Menara Jamsostek, Jalan Jenderal, Gatot Subroto No. 38, Jakarta 12710, Indonesia

CHINA

Guangzhou Guang Ai Insurance

Brokers Co., Ltd.

15th Floor, Zhongyin Building, No. 338 Qinghe Road, Panyu, Guangzhou, China

NEW ZEALAND

Aioi Management New Zealand Ltd.

602 Great South Road, Greenlane, Auckland 1130, New Zealand

Subsidiaries and Affiliates

DOMESTIC COMPANIES

As of July 2007

Company	Capital (¥ million)	Ownership of Parent Company (%)	Ownership of Subsidiaries (%)	Establishment	Business Line
Aioi Life Insurance Company, Limited*	25,000	100.0	—	1996	Life insurance
Aioi Research Institute Company, Limited	200	100.0	—	2005	Research of insurance business concerning products, sales supports and services, etc.
Aioi Support Box Co., Ltd.	30	70.0	30.0	1999	Management consultation and training support services for insurance agencies
Aioi Business Services Co., Ltd.	47	100.0	—	1982	Administration of non-life insurance and data entry
Aioi Claim Research Co., Ltd.	25	100.0	—	1975	Claim research
Aioi Insurance Systems Co., Ltd.	60	100.0	—	1995	Development and maintenance of software
Aioi Insurance Auto Technical Research Center Co., Ltd.	10	89.0	—	1994	Automobile repair technical research, training, and advisory services
Aioi Insurance Total Services Co., Ltd.	23	99.6	0.4	1983	Administration of real estate and facilities, warehousing, forwarding, management of printed matters, and temporary staffing
Aioi Insurance Finance Co., Ltd.	86.5	38.3	7.5	1985	Finance and loans
Aioi Risk Consulting Company, Limited	17.5	10.0	38.6	1987	Risk consultation and research services
Toyota Asset Management Co., Ltd.	600	50.0	—	1990	Asset management
Fureai Do-Life Services Co., Ltd.	221.5	100.0	—	2000	Nursing care related services
Advance Insurance Planning Co., Ltd.	1,500	49.9	—	2006	Planning of non-life insurance company
SBI Nonlife Insurance Planning Co., Ltd.	1,550	33.4	—	2006	Planning of non-life insurance company
Aioi Insurance CS-Desk Co., Ltd.	3,300	90.9	—	2006	Development, maintenance, and management of systems/call centers

* Consolidated subsidiaries

OVERSEAS COMPANIES

As of July 2007

Company	Capital	Ownership of Parent Company (%)	Ownership of Subsidiaries (%)	Establishment	Business Line
Aioi Motor and General Insurance Company of Europe Ltd. (U.K.)*	£65.3 million	100.0	—	2004	Non-life insurance
Aioi Life Insurance of Europe AG (Germany)*	Euro5 million	—	100.0	2005	Life insurance
Aioi Insurance Management Ltd. (U.K.)*	£10,000	—	100.0	1988	Non-life insurance general agency
Toyota Insurance Management Ltd. (U.K.)*	£500,000	—	75.0	1999	Insurance agency
DTRIC Insurance Co., Ltd. (U.S.A.)	US\$2.5 million	74.8	—	1978	Non-life insurance
DTRIC Insurance Underwriters, Ltd. (U.S.A.)	US\$2.5 million	—	100.0	2007	Non-life insurance
Aioi Insurance Company of America (U.S.A.)	US\$5 million	100.0	—	1994	Non-life insurance
PT. Asuransi Aioi Indonesia (Indonesia)	Rupiah15 billion	80.0	—	1996	Non-life insurance
Aioi Bangkok Insurance Co., Ltd. (Thailand)	THB15 million	23.4	—	1951	Non-life insurance
Aioi Management Services Singapore Pte, Ltd. (Singapore)	S\$200,000	100.0	—	1998	Risk management
Bangkok Chayoratn Co., Ltd. (Thailand)	THB2 million	39.0	—	1973	Non-life insurance broker
Bangkok Chayolife Co., Ltd. (Thailand)	THB1.5 million	—	99.9	2002	Life insurance broker
Paladin Reinsurance Corporation (U.S.A.)	US\$500,000	20.0	—	1980	Non-life reinsurance
Aioi Management New Zealand Ltd. (New Zealand)	NZ\$600,000	100.0	—	2005	Non-life insurance general agency
Guangzhou Guang Ai Insurance Brokers Co., Ltd. (China)	Yuan30 million	24.9	—	2006	Non-life insurance broker

* Consolidated subsidiaries

Board of Directors and Auditors

As of June 27, 2007

CHAIRMAN, DIRECTOR

Ryuji Araki

PRESIDENT, DIRECTOR

Tadashi Kodama*

DEPUTY PRESIDENTS, DIRECTORS

Masao Adachi*

Masahiko Ohji*

SENIOR MANAGING DIRECTORS

Hisahito Suzuki*

Shigeru Sudo*

Hiroaki Nagasue

*Representative Director

MANAGING DIRECTORS

Masayoshi Nakamura

Takayoshi Umemura

DIRECTORS

Mitsuo Kinoshita (outside)

Ryusuke Ono

Yoshihisa Ishii

SENIOR EXECUTIVE OFFICERS

Toshihiko Nakagawa

Shusuke Kobayashi

Tsukasa Yorifuji

Yasukazu Nagasaki

Takashi Suenaga

EXECUTIVE OFFICERS

Hiroshi Aizawa

Takao Shida

Tsutomu Matsumoto

Kenji Toda

Hirokazu Mizogami

Itaru Akihisa

Hideo Murakami

Takashi Matsumoto

Kazuhiko Kimura

Matsuhiko Sone

Yoshiaki Hayakawa

Shuji Nakahara

Jun Kawamura

Nobuaki Matsuzawa

Yoshio Ito

Makoto Yamamoto

Tori Ueno

Shin Ueno

Shuzo Kameda

AUDITORS

Corporate Auditors

Masashi Horie

Naotatsu Momoi

Outside Auditors

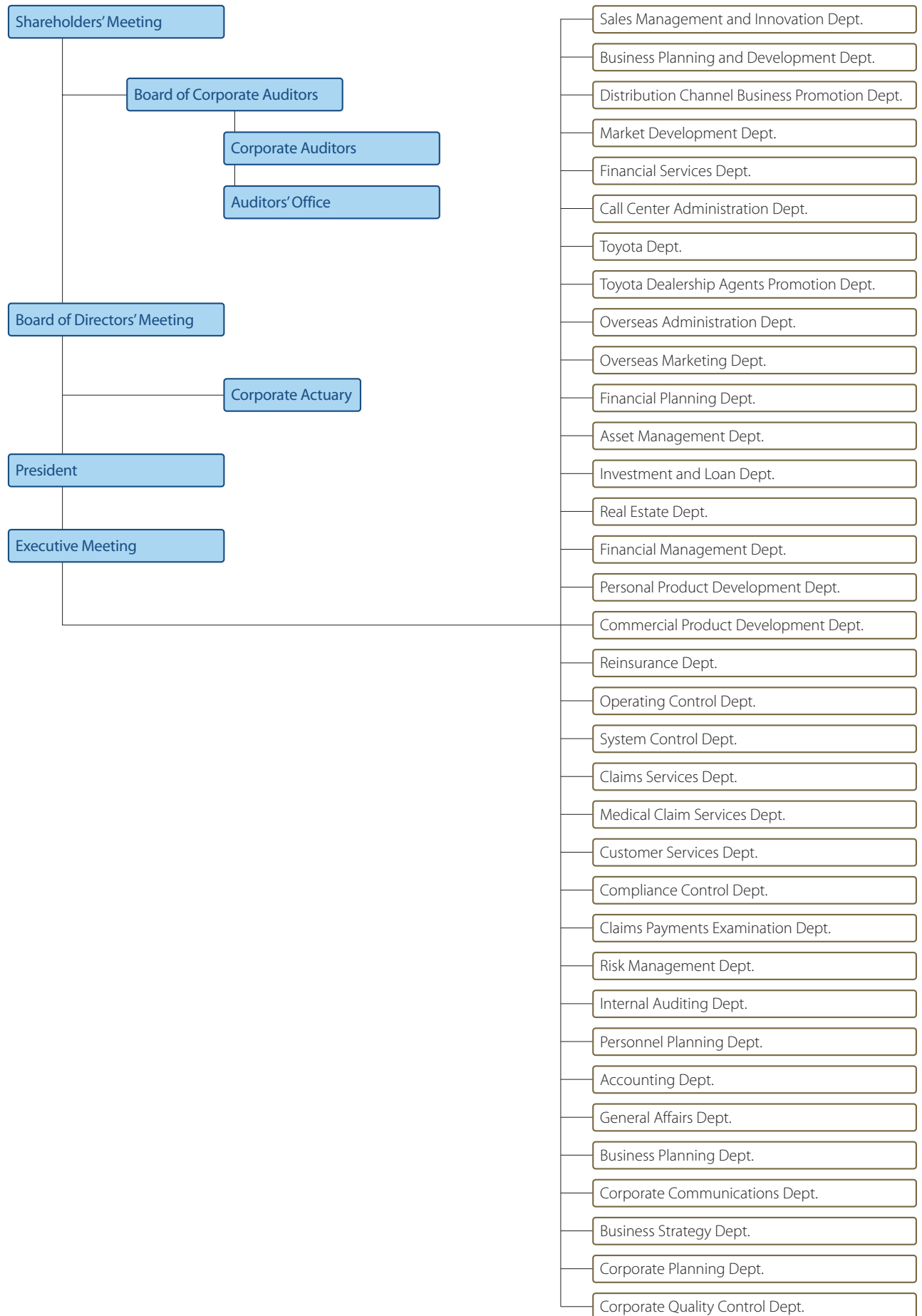
Shozo Hashimoto

Hideo Ogasawara

Yoshio Ishizaka

Organization

As of July 1, 2007



Milestones

1918	Tokyo Movable Property Fire Insurance Company established
1920	Toshin Fire Insurance Co., Ltd. (sister company), established
1944	Merger of Tokyo Movable Property Fire Insurance and Toshin Fire Insurance; name changed to Dai-Tokyo Fire Insurance Co., Ltd.
1949	Name changed to The Dai-Tokyo Fire & Marine Insurance Co., Ltd.
1959	Policy of active involvement in automobile insurance adopted
1968	50th anniversary, approval gained for long-term comprehensive insurance (Echo Insurance)
1983	24-hour claim reception service introduced
1989	The Dai-Tokyo Fire & Marine Insurance Shinjuku Building completed
1996	Head office relocated to Dai-Tokyo Fire & Marine Insurance Shinjuku Building; start of life insurance operations by newly established subsidiary (The Dai-Tokyo Shiawase Life Insurance Co., Ltd.)

1897	Otaru Cargo Insurance Co., Ltd., established
1913	Chiyoda Fire Insurance Co., Ltd., established
1919	Approval gained for involvement in general fire insurance, marine insurance, transportation insurance, and related reinsurance activities, enabling Otaru Cargo Insurance to become a general insurance company
1922	Name changed to Fukoku Fire & Marine Insurance Co., Ltd.
1942	Chitose Fire & Marine Reinsurance Co., Ltd., absorbed by Chiyoda Fire Insurance; Chiyoda Fire Insurance renamed Chiyoda Fire & Marine Insurance Co., Ltd.
1944	Merger of Fukoku Fire & Marine Insurance with Okura Fire & Marine Insurance Co., Ltd.
1945	Equal merger of Okura Fire & Marine Insurance and Chiyoda Fire & Marine Insurance to form Okura Chiyoda Fire & Marine Insurance Co., Ltd.
1946	Name changed to The Chiyoda Fire & Marine Insurance Co., Ltd.
1959	Tie-up with Chukyo business circles, including Toyota Motor Corporation and Tokai Bank, Limited
1996	Start of life insurance operations by newly established subsidiary (The Chiyoda Kasai Ebisu Life Insurance Co., Ltd.)

THE PATH TO MERGER

March 1, 2000	Merger of The Chiyoda Fire & Marine Insurance Co., Ltd., and The Dai-Tokyo Fire & Marine Insurance Co., Ltd., announced at the Imperial Hotel, Hibiya, Tokyo
September 8, 2000	Merger agreement signed; details of new company announced Name: Aioi Insurance Company, Limited Head Office: Ebisu, Tokyo, Japan
April 1, 2001	Aioi Insurance Company, Limited, established

Corporate Data (Non-Consolidated)

As of March 31, 2007

COMPANY NAME:

Aioi Insurance Company, Limited

DATE OF ESTABLISHMENT:

June 30, 1918

BUSINESS LINE:

Non-life insurance business

HEAD OFFICE:

28-1, Ebisu 1-chome, Shibuya-ku, Tokyo, Japan 150-8488

CAPITAL:

¥100.0 billion

STOCK LISTINGS:

Tokyo, Nagoya, Osaka

NUMBER OF SHARES ISSUED:

756,201,411

NUMBER OF SHAREHOLDERS:

24,848

RATINGS*1:

A⁺ (Standard and Poor's)

A1 (Moody's)

A⁺ (R&I Rating & Investment Information, Inc.)

A (A.M.BEST)

NET PREMIUMS WRITTEN:

¥851.2 billion

SALES BRANCH OFFICES*2:

109

SALES OFFICES*2:

511

CLAIM SERVICE OFFICES*2:

205

AGENTS*3:

42,499

EMPLOYEES:

8,725

*1 As of August 1, 2007

*2 As of July 1, 2007

*3 As of May 31, 2007

Aioi Insurance Company, Limited
1-28-1, Ebisu, Shibuya-ku, Tokyo 150-8488, Japan



THIS ANNUAL REPORT IS PRINTED ON FSC CERTIFIED PAPER

The FSC certified paper used in this annual report is sourced from paper products harvested from well-managed forests. Forest management was conducted with careful attention to neighboring ecosystems. The Company chose to use environmentally friendly FSC certified paper as an expression of its commitment to the protection of forests, which absorb CO₂ and provide a wide range of other benefits.