

Corporate Information

Contents

- 96** Overview of Subsidiaries and Affiliates
- 98** Overseas Network
- 102** History
- 104** Company Data

Overview of Subsidiaries and Affiliates

As of March 31, 2011

1. DOMESTIC

Company	Capital (¥ million)	Voting Rights of MS&AD Holdings (%)	Voting Rights of Subsidiary (%)	Establishment	Business Line
Mitsui Sumitomo Insurance Company, Limited	139,595	100.0	—	1918	Non-life insurance
Aioi Nissay Dowa Insurance Company, Limited	100,005	100.0	—	1918	Non-life insurance
Mitsui Direct General Insurance Company, Limited	32,600	69.6	—	1999	Non-life insurance
Mitsui Sumitomo Kirameki Life Insurance Company, Limited	35,500	100.0	—	1996	Life insurance
Aioi Life Insurance Company, Limited	30,000	—	100.0	1996	Life insurance
Mitsui Sumitomo MetLife Insurance Company, Limited*	41,060	51.0	—	2001	Life insurance
Mitsui Sumitomo Insurance Venture Capital Company, Limited	1,000	—	100.0	1990	Financial services
Sumitomo Mitsui Asset Management Company, Limited	2,000	—	27.5	1985	Financial services

* Name changed to Mitsui Sumitomo Primary Life Insurance Company, Limited as of April 1, 2011.

2. OVERSEAS

Company	Capital (¥ million)	Voting Rights of MS&AD Holdings (%)	Voting Rights of Subsidiary (%)	Establishment	Business Line
MSIG Holdings (Americas), Inc.	US\$3.6 million	—	100.0	1988	Management control services of subsidiaries as a holding company
Mitsui Sumitomo Insurance USA Inc.	US\$5 million	—	100.0	1988	Insurance
Mitsui Sumitomo Insurance Company of America	US\$5 million	—	100.0	2001	Insurance
Aioi Nissay Dowa Insurance Company of America	US\$5 million	—	100.0	1994	Insurance
DTRIC Insurance Company, Limited	US\$2.5 million	—	74.8	1978	Insurance
DTRIC Insurance Underwriters, Limited	US\$2.5 million	—	100.0	2007	Insurance
Mitsui Sumitomo Seguros S/A.	R\$281,368 thousand	—	99.0	1965	Insurance
MSIG Holdings (Europe) Limited	£541.843 million	—	100.0	2000	Management control services of subsidiaries as a holding company
Mitsui Sumitomo Insurance (London Management) Ltd.	£35.96 million	—	100.0	2000	Business management services

Company	Capital (¥ million)	Voting Rights of MS&AD Holdings (%)	Voting Rights of Subsidiary (%)	Establishment	Business Line
Mitsui Sumitomo Insurance Company (Europe), Limited	£66.9 million	—	100.0	1972	Insurance
Mitsui Sumitomo Insurance (London) Limited	£529.107 million	—	100.0	1975	Insurance
MSI Corporate Capital Limited	£5.2 million	—	100.0	2000	Insurance
Aioi Nissay Dowa Insurance Company of Europe Limited	£183.756 million	—	100.0	2004	Insurance
Dowa Insurance Company (Europe) Limited	£10 million	—	100.0	1975	Insurance
Aioi Nissay Dowa Life Insurance of Europe AG	€5 million	—	100.0	2005	Insurance
MS Frontier Reinsurance Limited	US\$294.588 million	—	100.0	1997	Reinsurance
Mitsui Sumitomo Reinsurance Limited	€20 million	—	100.0	1999	Reinsurance
MSIG Holdings (Asia) Pte. Ltd.	S\$673,515 thousand	—	100.0	2004	Management control services of subsidiaries as a holding company
MSIG Insurance (Singapore) Pte. Ltd.	S\$333,442 thousand	—	100.0	2004	Insurance
MSIG Mingtai Insurance Co., Ltd.	NT\$2,535 million	—	100.0	1961	Insurance
Mitsui Sumitomo Insurance (China) Company Limited	RMB500,000 thousand	—	100.0	2007	Insurance
MSIG Insurance (Hong Kong) Limited	HK\$1,625,842 thousand	—	100.0	2004	Insurance
Aioi Nissay Dowa Insurance (China) Company Limited	RMB260,000 thousand	—	100.0	2009	Insurance
MSIG Insurance (Vietnam) Company Limited	VND300,000 million	—	100.0	2009	Insurance
PT. Asuransi MSIG Indonesia	Rp40,000 million	—	80.0	1975	Insurance
MSIG Insurance (Thailand) Co., Ltd.	THB142,666 thousand	—	80.3	1983	Insurance
MSIG Insurance (Malaysia) Bhd.	MYR333,142 thousand	—	65.4 [1.4]	1979	Insurance
Hong Leong Assurance Berhad	MYR200,000 thousand	—	30.0	1982	Insurance
MSIG Insurance (Lao) Co., Ltd.	US\$2 million	—	51.0	2009	Guarantees for obligations relating to reinsurance policies

Notes: 1. Figures in [] represent percentage of voting rights belonging to closely allied entities or entities who are in agreement with MS&AD on voting issues.

2. Companies marked with * are included as subsidiaries in reality MS&AD exercises control over them, but at the same time has a holding of less than 50%.

3. Mitsui Sumitomo MetLife Insurance Company, Limited was converted to a wholly owned subsidiary of MS&AD Holdings, Inc. and the name changed to Mitsui Sumitomo Primary Life Insurance Company, Limited on April 1, 2011.

Overseas Network

(As of July 31, 2011)

-
- ☆ Overseas Branches
 - ★ Overseas Offices
 - Overseas Subsidiaries and Affiliates
 - △ Branches or Offices of Overseas Subsidiaries and Affiliates
 - Underwriting Agents for Head Office
-

ASIA AND OCEANIA

SINGAPORE

<MS&AD HOLDINGS>

- Interisk Asia Pte. Ltd.

<MSI>

- MSIG Holdings (Asia) Pte. Ltd.
- MSIG Insurance (Singapore) Pte. Ltd.
- △ Mitsui Sumitomo Reinsurance Limited Singapore Branch
- MS Frontier Re Modeling Research Pte. Ltd.

<AIOI NISSAY DOWA>

- Aioi Nissay Dowa Insurance Agency Singapore Pte. Ltd.

THAILAND

<MSI>

- ☆ Thailand Branch
- MSIG Insurance (Thailand) Co., Ltd.
- MSI Holding (Thailand) Company Limited
- MSIG Service and Adjusting (Thailand) Company Limited
- Calm Sea Service Company Limited
- MBTS Broking Services Company Limited
- MBTS Life Insurance Broker Co., Ltd.
- Ueang Mai Co., Ltd.
- Yardhimar Company Limited

<AIOI NISSAY DOWA>

- ★ Bangkok Representative Office
- Aioi Bangkok Insurance Co., Ltd.
- Bangkok Chayorath Co., Ltd.
- Bangkok Chayolife Co., Ltd.
- Kawasaki-Dowa Agency Ltd.

MALAYSIA

<MSI>

- MSIG Insurance (Malaysia) Bhd.
- MSIG Berhad
- Hong Leong Assurance Berhad
- Hong Leong MSIG Takaful Berhad
- △ Mitsui Sumitomo Reinsurance Limited Labuan Branch
- Labuan Branch Kuala Lumpur Office

PHILIPPINES

<MSI>

- BPI/MS Insurance Corporation
- FLT Prime Insurance Corporation

INDONESIA

<MSI>

- PT. Asuransi MSIG Indonesia
- PT. Auto Management Services
- PT. Asuransi Jiwa Sinarmas MSIG

REPUBLIC OF KOREA

<MSI>

- ☆ Korea Branch

<AIOI NISSAY DOWA>

- ★ Lotte Insurance Co., Ltd.*
- *Liaison office

PEOPLE'S REPUBLIC OF CHINA

<MS&AD HOLDINGS>

- InterRisk Consulting (Shanghai) Co.,Ltd

<MSI>

- Mitsui Sumitomo Insurance (China) Company Limited
- △ Guangdong Branch Shenzhen Marketing Service Department
- △ Beijing Branch
- △ Jiangsu Branch Suzhou Marketing Service Department
- ★ China General Representative Office
- ★ Dalian Representative Office
- ★ Chengdu Representative Office
- ★ Hangzhou Representative Office
- ★ Qingdao Representative Office

<AIOI NISSAY DOWA>

- ★ Beijing Representative Office
- ★ Guangzhou Representative Office
- ★ Ping An Property & Casualty Insurance Company of China, Ltd.*
- *Liaison office
- Aioi Nissay Dowa Insurance (China) Company Limited
- △ Zhejiang Branch
- Guangzhou Guang Ai Insurance Brokers Co., Ltd.

HONG KONG

<MSI>

- MSIG Insurance (Hong Kong) Limited
- Oriental Management Services Limited
- M&H Insurance Agency Limited

<AIOI NISSAY DOWA>

- ★ Hong Kong Representative Office

TAIWAN

<MSI>

- MSIG Mingtai Insurance Co., Ltd.

<AIOI NISSAY DOWA>

- ★ Taipei Representative Office

VIETNAM

<MSI>

- MSIG Insurance (Vietnam) Company Limited
- ★ Hanoi Representative Office
- ★ Ho Chi Minh Representative Office

<AIOI NISSAY DOWA>

- ★ Hanoi Representative Office

INDIA

<MSI>

- Cholamandalam MS General Insurance Company Limited
- Cholamandalam MS Risk Services Limited
- ★ New Delhi Representative Office

MYANMAR

<MSI>

- ★ Yangon Representative Office

CAMBODIA

<MSI>

- Asia Insurance (Cambodia) Plc.

LAOS

<MSI>

- MSIG Insurance (Lao) Co.,Ltd.

AUSTRALIA

<MSI>

- ☆ Australia Branch
- ★ Sydney Representative Office
- ★ Melbourne Representative Office

<AIOI NISSAY DOWA>

- ☆ Australian Branch
- ★ Sydney Representative Office
- ★ Melbourne Representative Office
- Aioi Nissay Dowa Management Australia Pty. Ltd

NEW ZEALAND

<MSI>

- ☆ New Zealand Branch
- ★ New Zealand Representative Office

<AIOI NISSAY DOWA>

- Aioi Nissay Dowa Management New Zealand Limited

PAPUA NEW GUINEA

<MSI>

- ☆ Papua New Guinea Branch
- ★ Papua New Guinea Representative Office

THE AMERICAS

U.S.A.

<MSI>

- MSIG Holdings (Americas), Inc.
- Mitsui Sumitomo Insurance Company of America
- Mitsui Sumitomo Insurance USA Inc.
- Mitsui Sumitomo Marine Management (U.S.A.), Inc.
- △ New York Office
- △ Los Angeles Office
- △ Cincinnati Office
- △ Atlanta Office
- △ Chicago Office
- △ Detroit Office
- MSI Risk Management Services, Inc.
- Seven Hills Insurance Agency, LLC
- MSI Claims (USA), Inc.
- MSI GuaranteedWeather, LLC
- Vortex Insurance Agency, LLC

<AIOI NISSAY DOWA>

- ★ New York Representative Office
- ★ Chicago Representative Office
- ★ Kentucky Representative Office
- ★ Los Angeles Representative Office
- ★ Honolulu Representative Office
- Aioi Nissay Dowa Insurance Company of America
- △ New York Branch
- △ Kentucky Branch
- △ Los Angeles Branch
- △ Detroit Branch
- DTRIC Insurance Company, Limited
- DTRIC Insurance Underwriters, Limited

GUAM (U.S.A.)

<AIOI NISSAY DOWA>

- Takagi & Associates, Inc.

NORTHERN MARIANAS (U.S.A.)

<AIOI NISSAY DOWA>

- Takagi & Associates, Inc. Saipan Branch

CANADA

<MSI>

- ★ Toronto Representative Office c/o Chubb Insurance Company of Canada
- Chubb Insurance Company of Canada

BERMUDA

<MS&AD HOLDINGS>

- Interisk Global Management (Bermuda) Limited

<MSI>

- MS Frontier Reinsurance Limited
- SPAC Insurance (Bermuda) Limited
- MSI GuaranteedWeather Trading Ltd.

MEXICO

<MSI>

- △ MSIG Holdings (Americas), Inc. Mexican Representative Office c/o Mapfre Tepeyac, S.A.

PANAMA

<MSI>

- ★ Panama Representative Office

BRAZIL

<MSI>

- Mitsui Sumitomo Seguros S/A.
- Mitsui Sumitomo Insurance Company Limited-Escritório de Representação no Brasil Ltda.
- ★ São Paulo Representative Office

COLOMBIA

<MSI>

- ★ Bogotá Representative Office

PERU

<MSI>

- ★ Lima Representative Office

ARGENTINA

<MSI>

- ★ Buenos Aires Representative Office

EUROPE AND THE MIDDLE EAST

UNITED KINGDOM

<MSI>

- MSIG Holdings (Europe) Limited
- Mitsui Sumitomo Insurance Company (Europe), Limited
- △ UK Branch
UK Branch Derby Office
- MSIG Corporate Services (Europe) Limited
- Mitsui Sumitomo Insurance (London Management) Ltd.
- MSI Corporate Capital Limited
- Mitsui Sumitomo Insurance (London) Limited
- Mitsui Sumitomo Insurance Underwriting at Lloyd's Limited

<AIOI NISSAY DOWA>

- ★ London Representative Office
- Aioi Nissay Dowa Insurance Company of Europe Limited
- Aioi Nissay Dowa Insurance Management Limited
- Toyota Insurance Management Limited
- Dowa Insurance Company (Europe) Limited

IRELAND

<MSI>

- Mitsui Sumitomo Reinsurance Limited

GERMANY

<MSI>

- △ Mitsui Sumitomo Insurance Company (Europe), Limited
German Branch
- MSIG German Services GmbH

<AIOI NISSAY DOWA>

- △ Aioi Nissay Dowa Insurance Company of Europe Limited
German Branch
- △ Toyota Insurance Management Limited
German Branch
- Aioi Nissay Dowa Life Insurance of Europe AG

THE NETHERLANDS

<MSI>

- △ Mitsui Sumitomo Insurance Company (Europe), Limited
The Netherlands Branch

<AIOI NISSAY DOWA>

- Aioi Nissay Dowa Insurance Company of Europe Limited c/o W.A. Hienfeld B.V.

FRANCE

<MSI>

- △ Mitsui Sumitomo Insurance Company (Europe), Limited
France Branch

<AIOI NISSAY DOWA>

- ★ Paris Representative Office
- △ Aioi Nissay Dowa Insurance Company of Europe Limited
French Branch
- △ Toyota Insurance Management Limited
French Branch

BELGIUM

<MSI>

- △ Mitsui Sumitomo Insurance Company (Europe), Limited
Belgium Branch

<AIOI NISSAY DOWA>

- ★ Brussels Representative Office
- △ Aioi Nissay Dowa Insurance Company of Europe Limited
Belgian Branch
- △ Toyota Insurance Management Limited
Belgian Branch

SWITZERLAND

<MSI>

- MS Frontier Reinsurance Limited
Switzerland Branch

SPAIN

<MSI>

- △ Mitsui Sumitomo Insurance Company (Europe), Limited
Spain Branch

<AIOI NISSAY DOWA>

- △ Aioi Nissay Dowa Insurance Company of Europe Limited
Spanish Branch
- △ Toyota Insurance Management Limited
Spanish Branch

ITALY

<MSI>

- △ Mitsui Sumitomo Insurance Company (Europe), Limited
Italy Branch

<AIOI NISSAY DOWA>

- △ Aioi Nissay Dowa Insurance Company of Europe Limited
Italian Branch
- △ Toyota Insurance Management Limited
Italian Branch

CZECH REPUBLIC

<MSI>

- △ Mitsui Sumitomo Insurance Company (Europe), Limited
Czech Branch

SLOVAKIA

<MSI>

- △ Mitsui Sumitomo Insurance Company
(Europe), Limited
Slovakia Branch

RUSSIA

<MSI>

- ★ Moscow Representative Office
- ★ St. Petersburg Representative Office

<AIOI NISSAY DOWA>

- ★ Moscow Representative Office

NORWAY

<MSI>

- SMA MSI AS

<AIOI NISSAY DOWA>

- Aioi Nissay Dowa Insurance Company of
Europe Limited c/o Tennant Forsikring
NUF

UNITED ARAB EMIRATES

<MSI>

- ★ Dubai Representative Office
- ★ Abu Dhabi Representative Office

QATAR

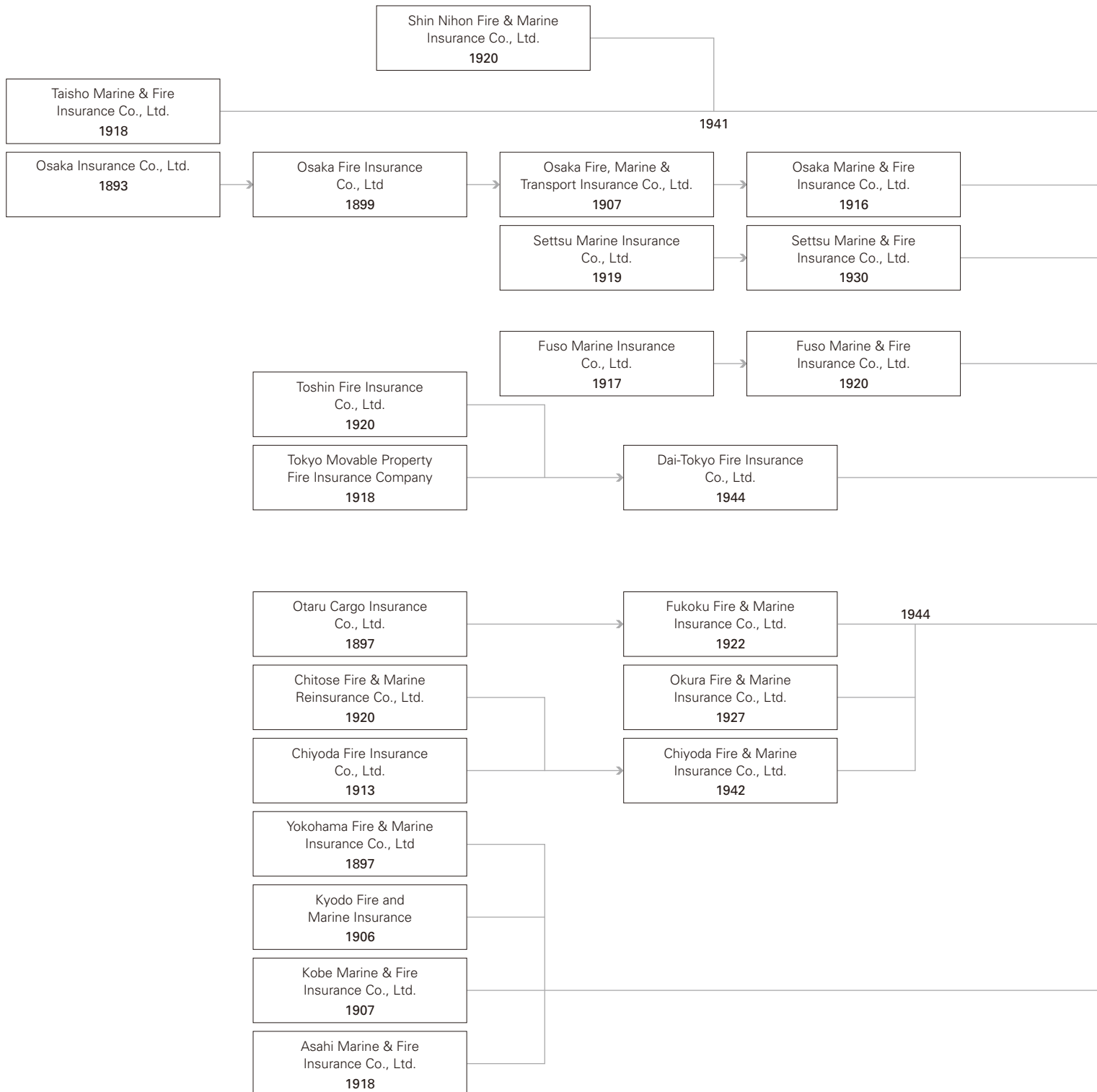
<MSI>

- △ Mitsui Sumitomo Insurance Company
(Europe), Limited
Qatar Branch

History

APRIL 2008

MSIG IPO on Tokyo Stock Exchange, Osaka Securities Exchange and Nagoya Stock Exchange, MSIG is incorporated.



SEPTEMBER 2009

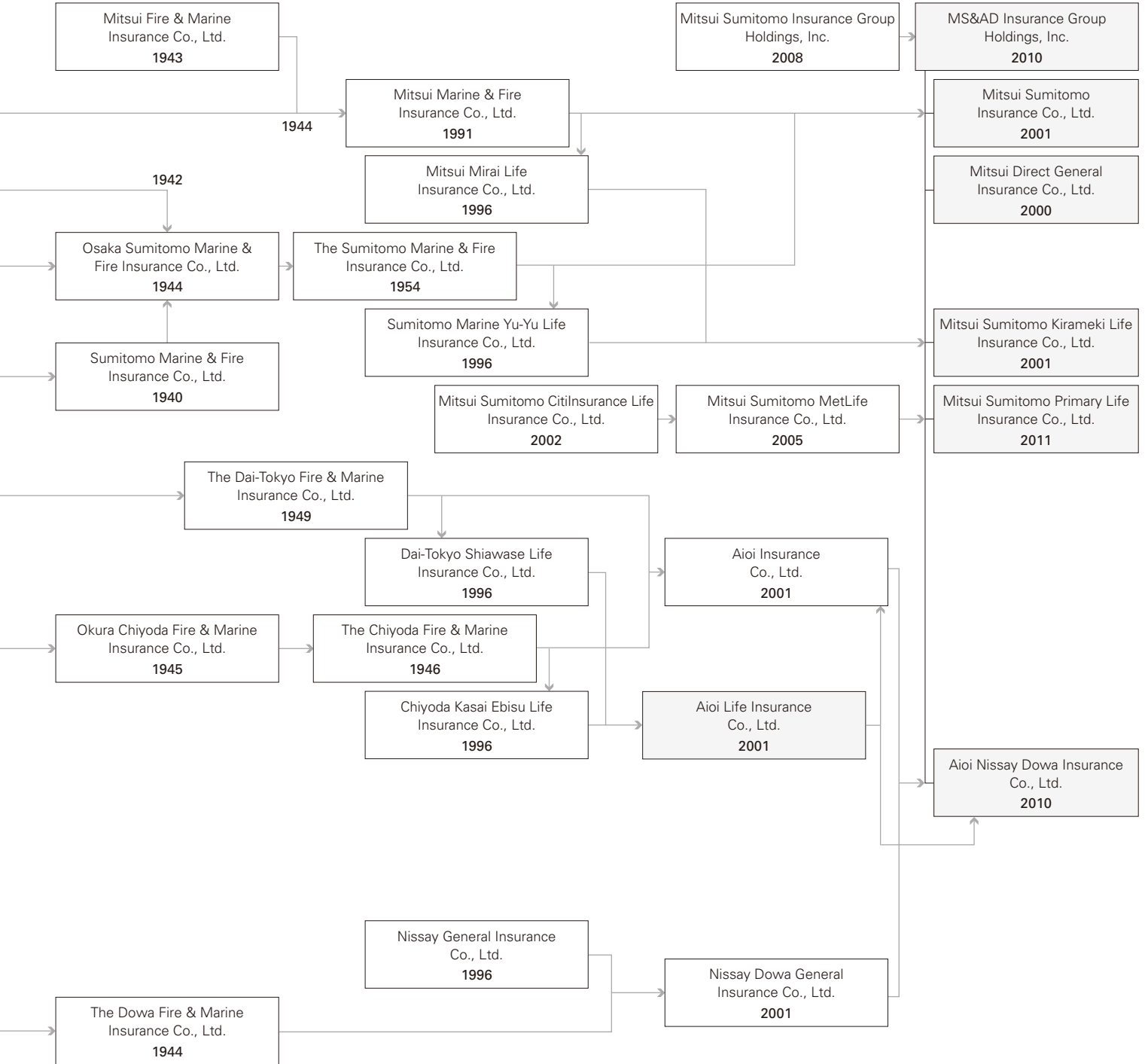
Aioi Insurance, Nissay Dowa General Insurance, and Mitsui Sumitomo Insurance Group reach basic agreement on business integration.

OCTOBER 2010

Aioi Nissay Dowa Insurance Co., Ltd. was created through merger of Aioi Insurance Co., Ltd. and Nissay Dowa General Insurance Co., Ltd.

APRIL 2010

Name change to MS&AD Insurance Group Holdings



Company Data

MS&AD Insurance Group Holdings, Inc. is the holding company of the new Group formed in April 2010 through the merger of Mitsui Sumitomo Insurance Group Holdings, Inc., Aioi Insurance Co., Ltd. and Nissay Dowa General Insurance Co., Ltd.

The purpose of the new Group is to achieve sustainable growth and to enhance enterprise value through the creation of a world-leading insurance and financial services group that operates globally, by rapidly and significantly improving quality and expanding its operating presence and corporate resources.

Company Data

CORPORATE NAME	MS&AD Insurance Group Holdings, Inc. Abbrev.: MS&AD Holdings
DATE ESTABLISHED	April 1, 2008 (Name changed on April 1, 2010)
HEADQUARTERS	Yaesu First Financial Building, Yaesu 1-3-7, Chuo-ku, Tokyo, 103-0028 Japan
REPRESENTATIVE	Representative Director, President & CEO Toshiaki Egashira
PAID-IN CAPITAL	100,000,000,000 yen
NUMBER OF EMPLOYEES	94 (As of March 31, 2011)
BUSINESS DESCRIPTION	Our activities as a holding insurance company are: 1. Management of non-life insurance companies, life insurance companies and companies qualified to become subsidiaries under Insurance Business Law. 2. Any business associated with the business listed above.
STOCK LISTING	Tokyo Stock Exchange (First Section) Osaka Securities Exchange (First Section) Nagoya Stock Exchange (First Section)

Stock and Shareholders

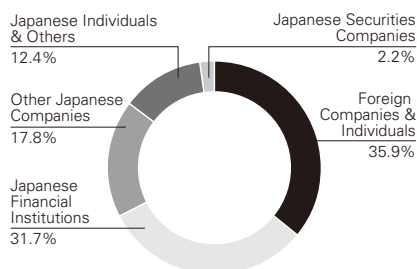
SUMMARY OF ISSUED SHARES (As of April 1, 2011)

CLASS OF STOCK	Common stock
AUTHORIZED SHARES	900,000,000 shares
ISSUED SHARES	633,291,754 shares

SHAREHOLDING PROFILE (As of March 31, 2011)

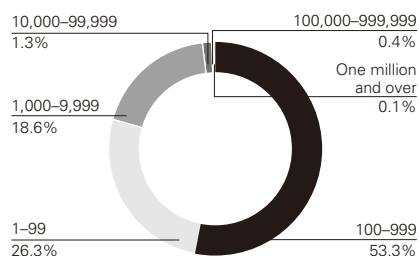
BREAKDOWN BY SECTOR

(Percentage of shares issued)



BREAKDOWN BY NUMBER OF SHARES HELD

(Percentage of all shareholders)



KEY INFORMATION

FISCAL YEAR	Apr. 1 to Mar. 31 of the following year
ANNUAL SHAREHOLDERS' MEETING	Within 3 months of the end of each fiscal year
DATE OF RECORD FOR DIVIDENDS	Sep. 30 for interim dividends Mar. 31 for year-end dividends
CONTACT	The Sumitomo Trust and Banking Co., Ltd., Stock Transfer Agency Dept. (Nikko-cho 1-10, Fuchu, Tokyo 183-8701 Japan)
ADMINISTRATOR OF SHAREHOLDERS' REGISTRY	The Sumitomo Trust and Banking Co., Ltd. (Kitahama 4-5-33 Chuo-ku, Osaka, Japan)
PLACE OF BUSINESS OF ADMINISTRATOR OF SHAREHOLDERS' REGISTRY	The Sumitomo Trust and Banking Co., Ltd., Stock Transfer Agency Dept. (Yaesu 2-3-1, Chuo-ku, Tokyo, Japan)

MS&AD MS&AD Insurance Group Holdings, Inc.

Corporate Communications and Investor Relations Dept.
Yaesu First Financial Building, Yaesu 1-3-7, Chuo-ku, Tokyo, 103-0028 Japan
Telephone: +81-3-6202-5268
Facsimile: +81-3-6202-6882
E-mail: ms_ad_ir@ms-ad-hd.com
URL: <http://www.ms-ad-hd.com/en/ir/index.html>

